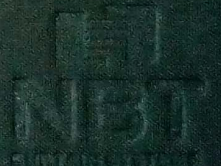


# VISION IN LUXE

ROLLER, ROMAN AND PANEL BLINDS







## VISION IN LUXE

The Vision in Luxe collection brings with it trendy yet subtle designs from around the world and combines it with earthy textures and hues that make your room speak eloquently and with finesse.

The collection comprises of Sheer, Linen and Blackout. Each fabric adds to the atmosphere in your home. Each texture creates a natural feel. Every room is basked in a vision of luxury.

## THE FABRICS

The transparent fabrics have vibrant colors or you could choose a more earthy look from the Linen collection. Modern designs are show cased hand in hand with traditional patterns.

Each fabric is from a place that reflects a bit of its character and some part of that world will enter your home.



There are a range of transparencies to choose from. Sheers can be combined with blackouts. You can create an interesting play of light based on design and functionality.





## THE TEXTURES

The textures range from some fabrics with sheen in the blackout and transparent collection to very natural feels in the linen collection. Combinations of slub yarns, use of various weaving patterns, embossing and jacquard weaves give each fabric its own unique identity.

## VISION IN COMFORT

The different range of transparencies allow for choosing a suitable fabric based on the sun path. The designs, colours, patterns and textures add to the visual well being and feeling of warm comfort.

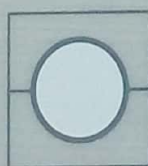


The fabrics can be used in the form of Roller, Roman and Panel Blinds. Combinations of Sheer and Blackout or a Linen and Blackout are important for practicality and add to the visual delight.



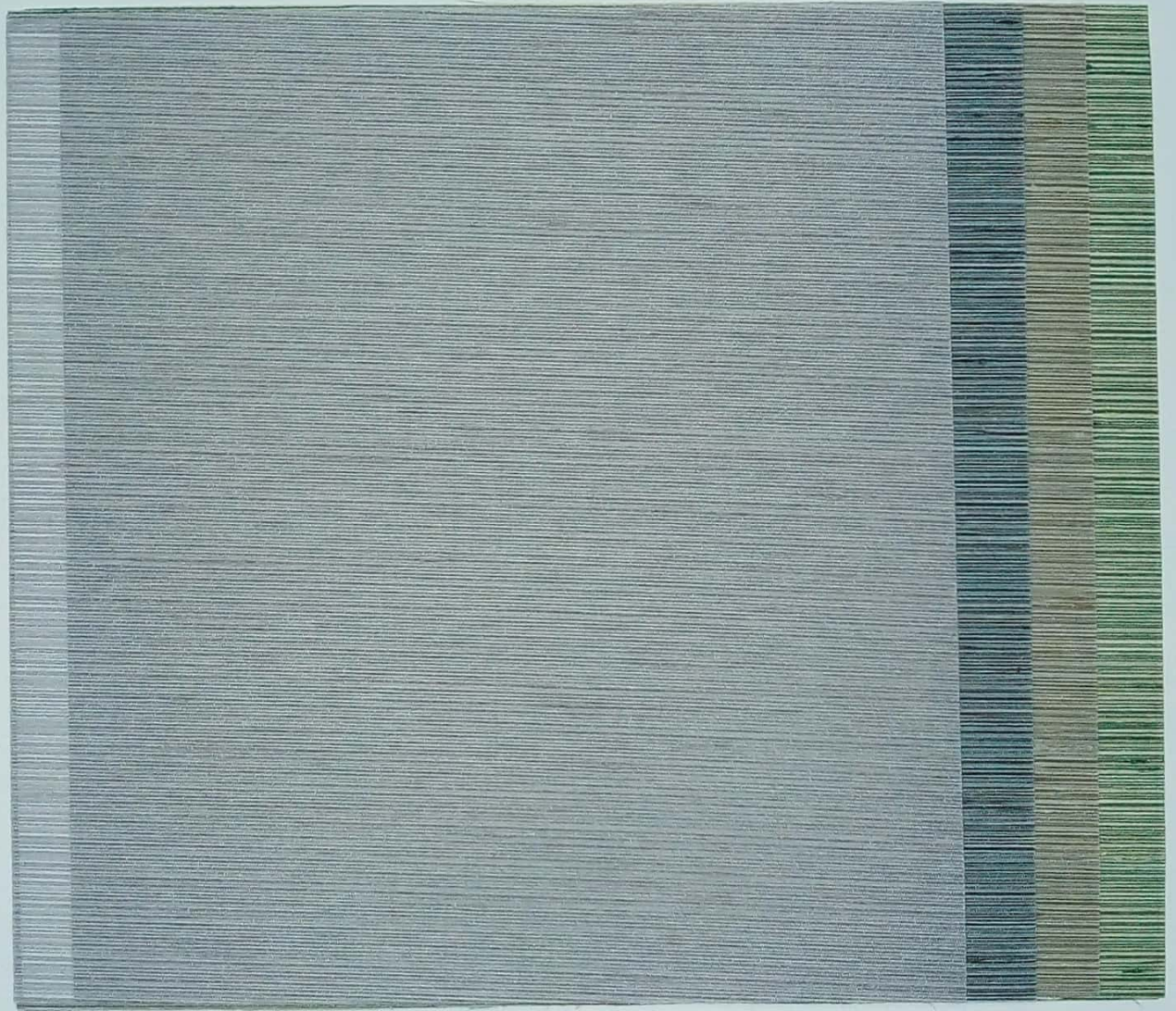
FLORENCE SHEER

# LUXE SHEER



Transparent fabrics that are made of different structured effect yarns form a part of this collection. Due to its structure the fabric beautifully filters light. The intriguing blend of designs add to the charm.

# FLORENCE SHEER



LS-1901 LS-1902 LS-1903 LS-1904





# FLORENCE

The use of slub-effect yarns, threads with deliberate irregularities in thickness, gives semi-transparent roller fabric Florence its natural silk texture. The sophisticated melange of yarns from the same colour family and the subtle shine of the roller fabric underline its classical luxury look. Roller fabric Florence is available in four colours.

65% PES + 35% VISCOSE



280cm

110 g/m<sup>2</sup>



0.25mm



PVC free



Cold  
Cuttable



# NIAGARA SHEER



LS-1905 LS-1906



# NIAGARA

The transparent design in the semi-transparent fabric Niagara is created by means of burn-out technique. The fabric is made of a mix of polyester and viscose. To create the design, the viscose is burnt out of the roller fabric. With its subtle circular design roller fabric Niagara is a pure and sophisticated addition for any contemporary interior. Fabric Niagara is available in two colours.

70% PES + 30% VISCOSE



280cm

104 g/m<sup>2</sup>



0.24mm



PVC free



Cold  
Cuttable



ORLANDO SHEER



LS-1907 LS-1908





## ORLANDO

The transparent design of graphic circles in this semi-transparent white fabric is created by means of a burn-out dyeing technique. The design is created by burning the viscose out of the polyester/viscose roller fabric while dyeing it at the same time. The fabric has a light, modern look with a refreshing water bubble effect. Fabric Orlando is available with circles in two warm colours.

70% PES + 30% VISCOSE



230cm

103 g/m<sup>2</sup>



0.24mm



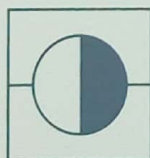
PVC free



Cold  
Cuttable

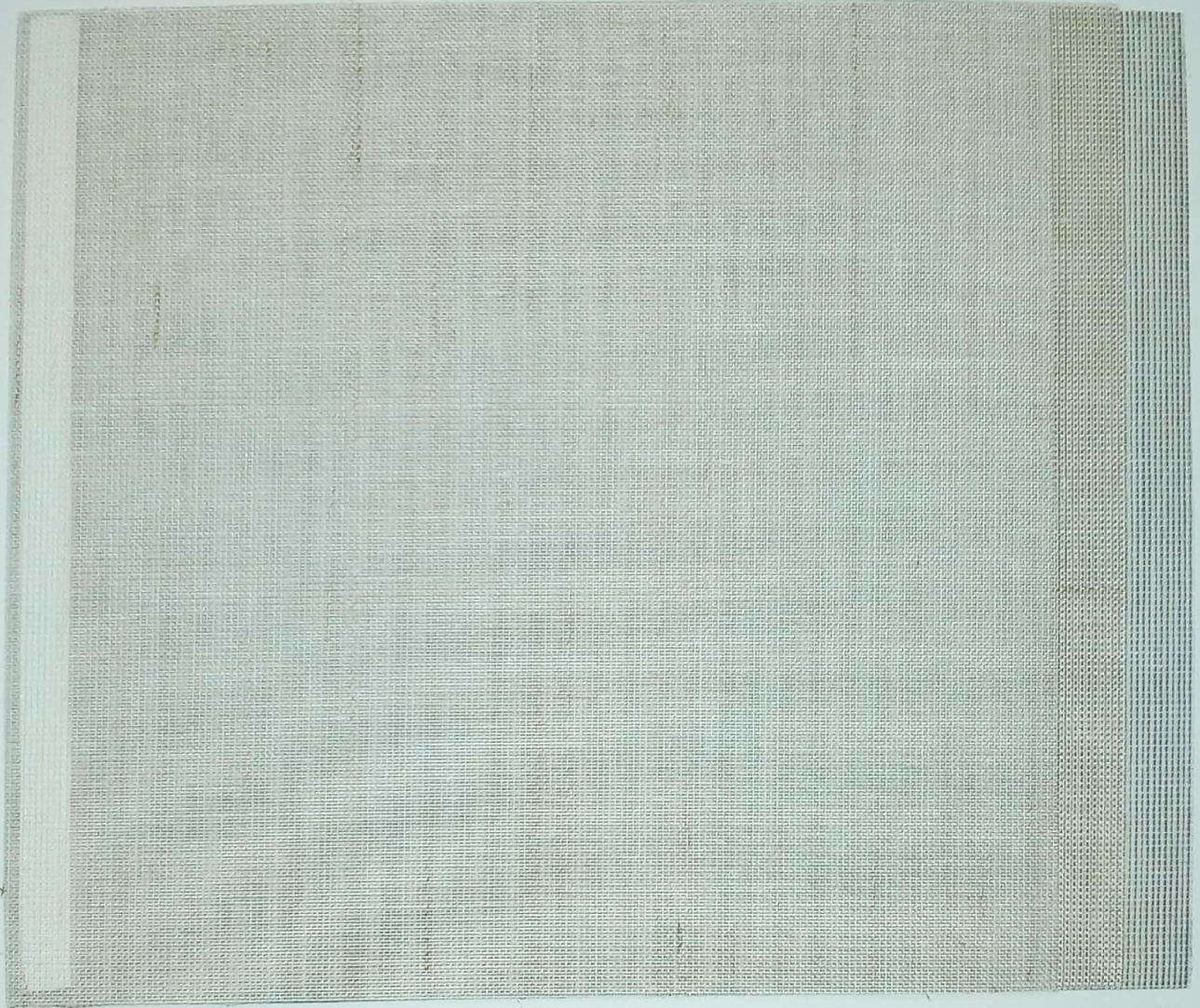


# LUXE LINEN

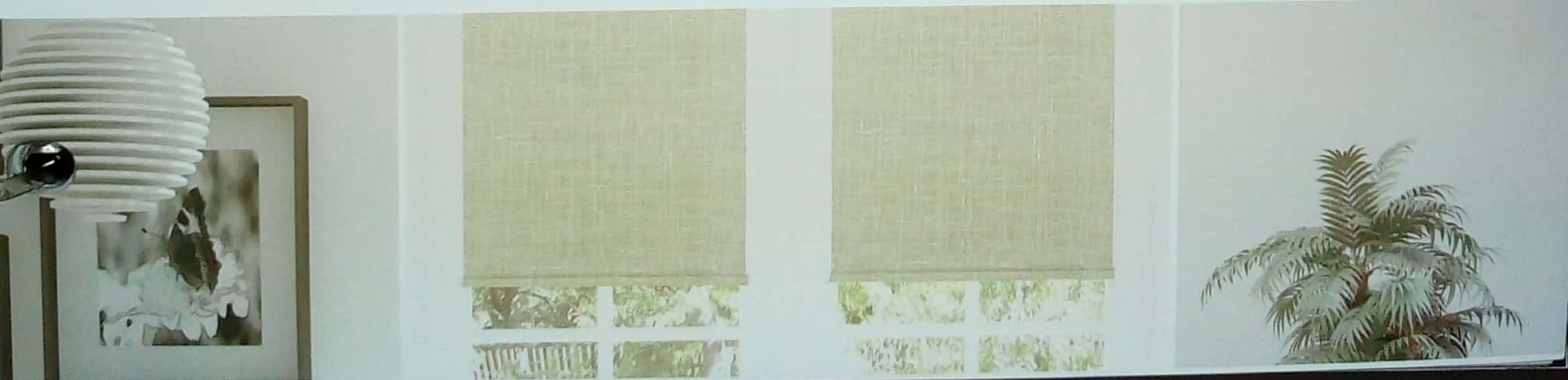


This collection is characterised by an authentic weaving structure. Due to the use of slub effect yarns the roller fabric has a lively look and a natural textile feeling. The roller fabric softens the light and view while preserving visual contact with the outside world.

# BALI LINEN



L-1921 L-1922 L-1924





# BALI

The high-quality fabric has an open character and a pure, natural look, which is created by the use of textured effect yarns in both weft and warp and 5% linen. The combination of S and Z yarns ensures optimal stability. The refined weaving structure of the fabric creates an exceptional light filtering. Fabric Bali is available in four subdued colours.

95% PES + 5% VISCOSE



230cm

115 g/m<sup>2</sup>



0.30mm



PVC free

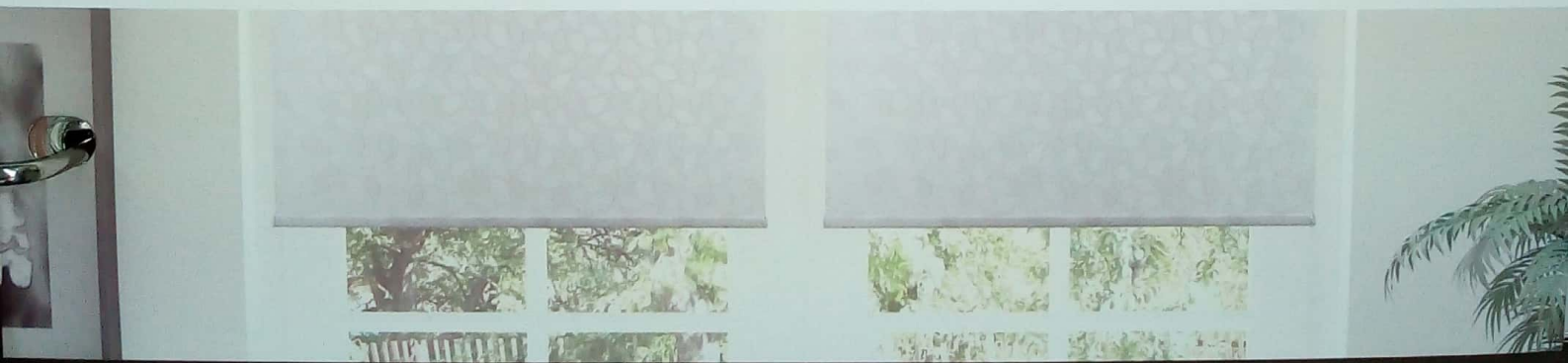


Cold  
Cuttable

# JAIPUR LINEN



L-1925 L-1926





# JAIPUR

For Sherly-fabric Jaipur, designer Christian Muller developed a contemporary all-over pattern of scattered leaves. Different types of weft yarns are used and partly shaven from the fabric in order to create the transparent design. The subtle fraying of the outline of the pattern combined with a mix of open and dense weaving structures and different transparency levels creates a vivid three-dimensional look. Fabric Jaipur is available in two natural colours.

100% PES



230cm

94 g/m<sup>2</sup>



0.38mm



PVC free



Cold  
Cuttable

# CINQUETERRE LINEN



L-1927 L-1928





# CINQUETERRE

The fabric has a beautiful natural blended weaving pattern. The weaving texture creates a lovely light filtering, worked out in a combination of two stylish colours. The Roller fabric has a sophisticated and authentic look.

95% PES + 5% VISCOSE



300cm

115 g/m<sup>2</sup>



0.30mm

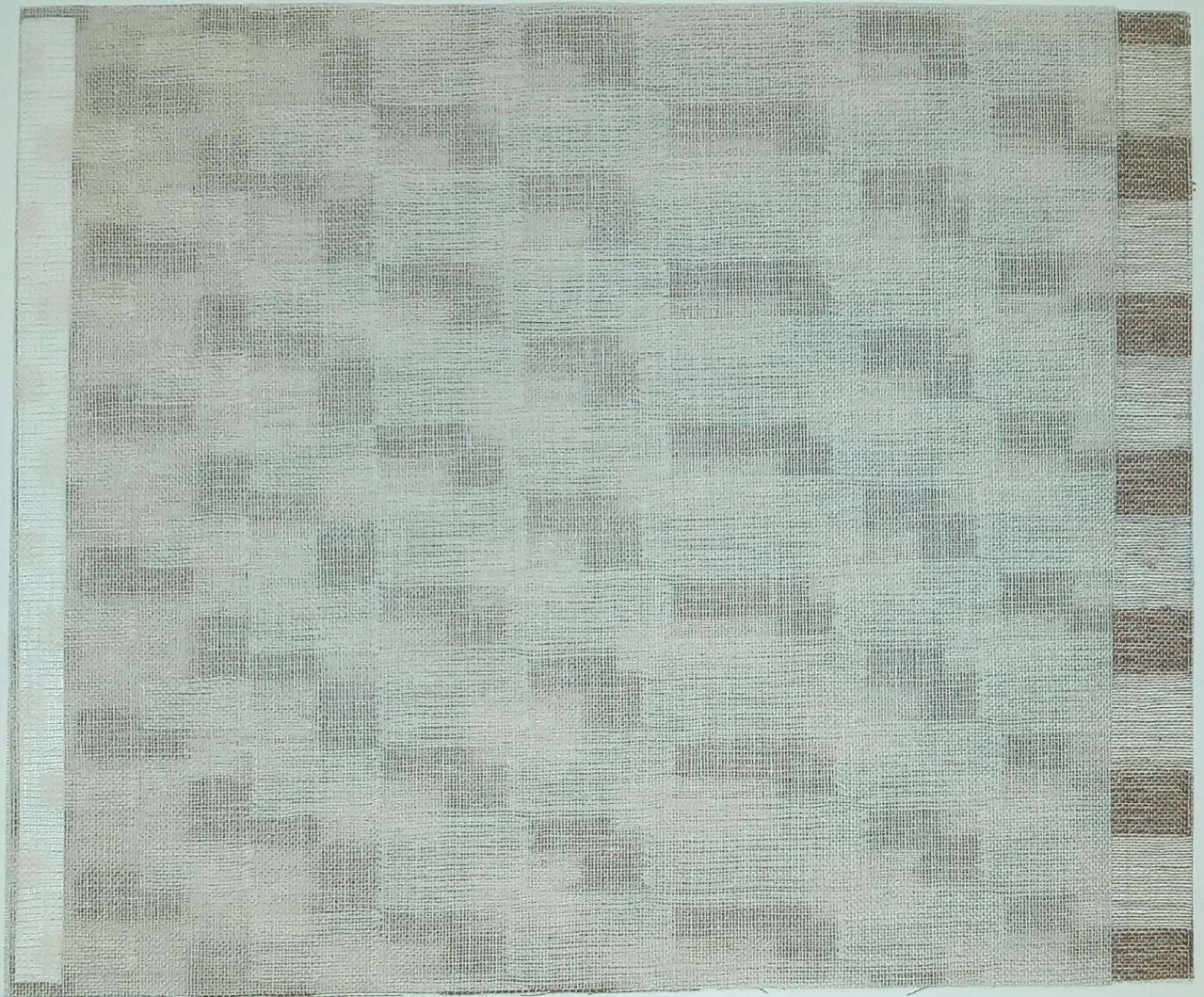


PVC free

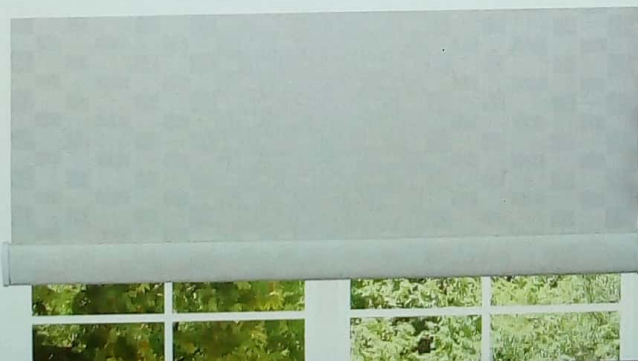


Cold  
Cuttable

# INVERNESS LINEN



L-1929 L-1930





# INVERNESS

Semi-transparent fabric Cinqueterre has a natural linen look. The woven fabric has a real textile feeling. This fabric gives the interior a pure and relaxed atmosphere.

95% PES + 5% VISCOSE



300cm

115 g/m<sup>2</sup>



0.30mm



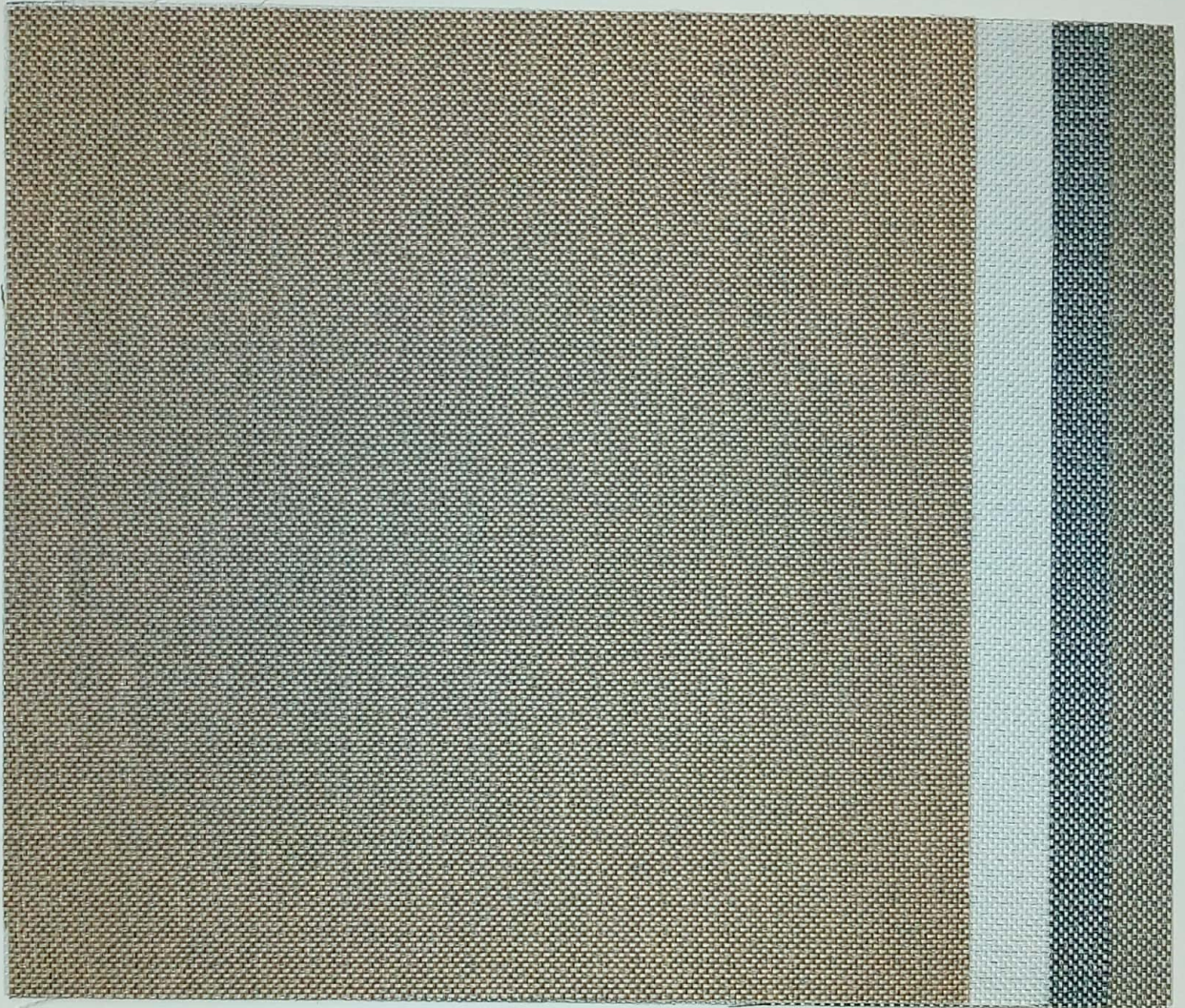
PVC free



Cold  
Cuttable



# MANCHESTER LINEN



L-1931 L-1932 L-1933 L-1934







# MANCHESTER

Manchester was at one point the textile centre of the world. Inspired by the mills in Manchester this fabric is a wonderful blend of the classic weave. It brings about a sense of class to your room.

100% PES



240cm

185 g/m<sup>2</sup>



0.52mm

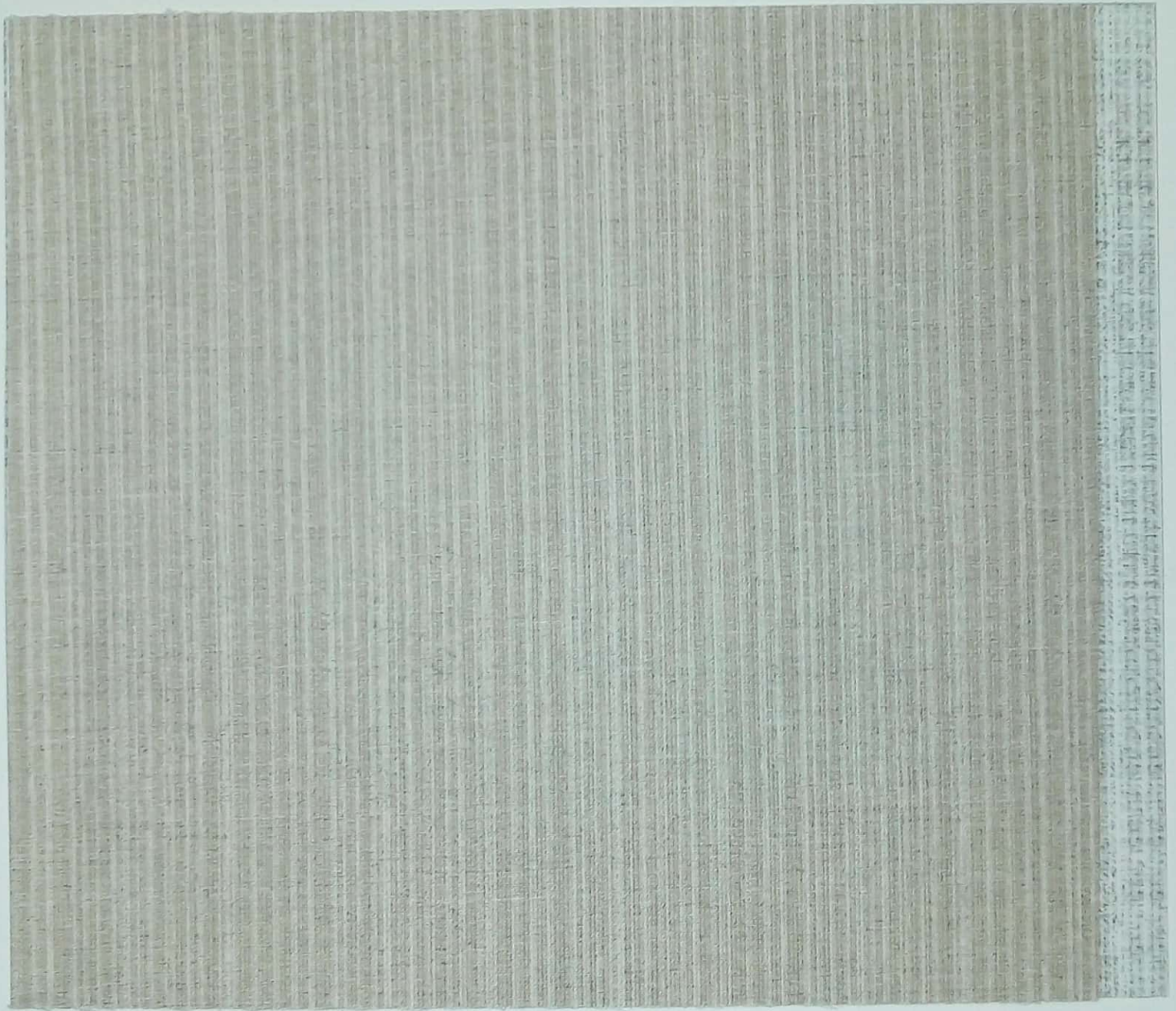


PVC free

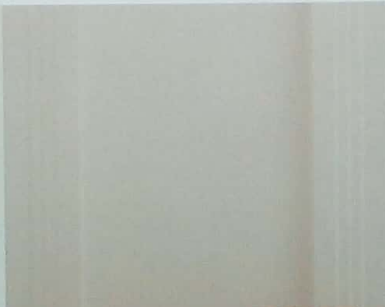


Cold  
Cuttable

# PARIS LINEN



L-1935 L-1936





# PARIS

Paris Linen is a fabric with chic and modern style. It blends the traditional linen feel with a modern print creating a stunning effect.

100% PES



300cm

221 g/m<sup>2</sup>



0.43mm

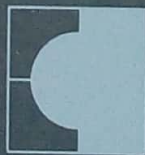


PVC free



Cold  
Cuttable

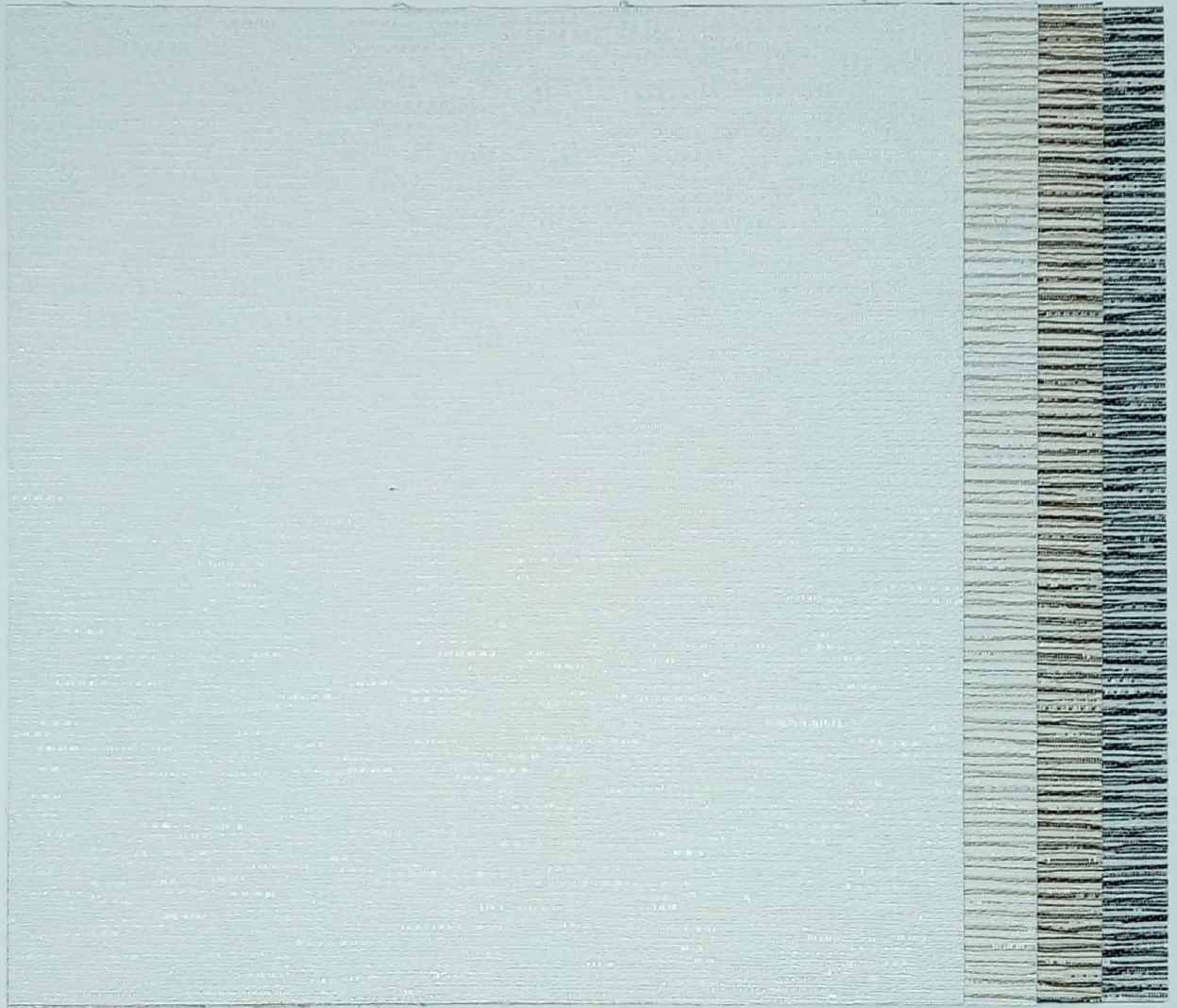
# LUXE BLACKOUT



Luxe Blackout fabrics offer Style and Functionality in one. These high quality 100% Blackout fabrics allow for complete darkness. The special coatings give the fabric additional body and a robust look.



# BOSTON BLACKOUT

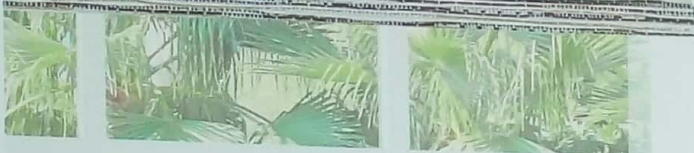


LB-1941 LB-1942 LB-1943 LB-1944



# BOSTON

Black-out roller fabric Boston has a beautiful blended weaving pattern. The fabric has a white backing and has been worked out in four chalky colours inspired by the sea and the beach. Due to its natural look, the fabric gives the interior a pure and relaxed atmosphere.



100% PES



240cm



330 g/m<sup>2</sup>



0.54mm



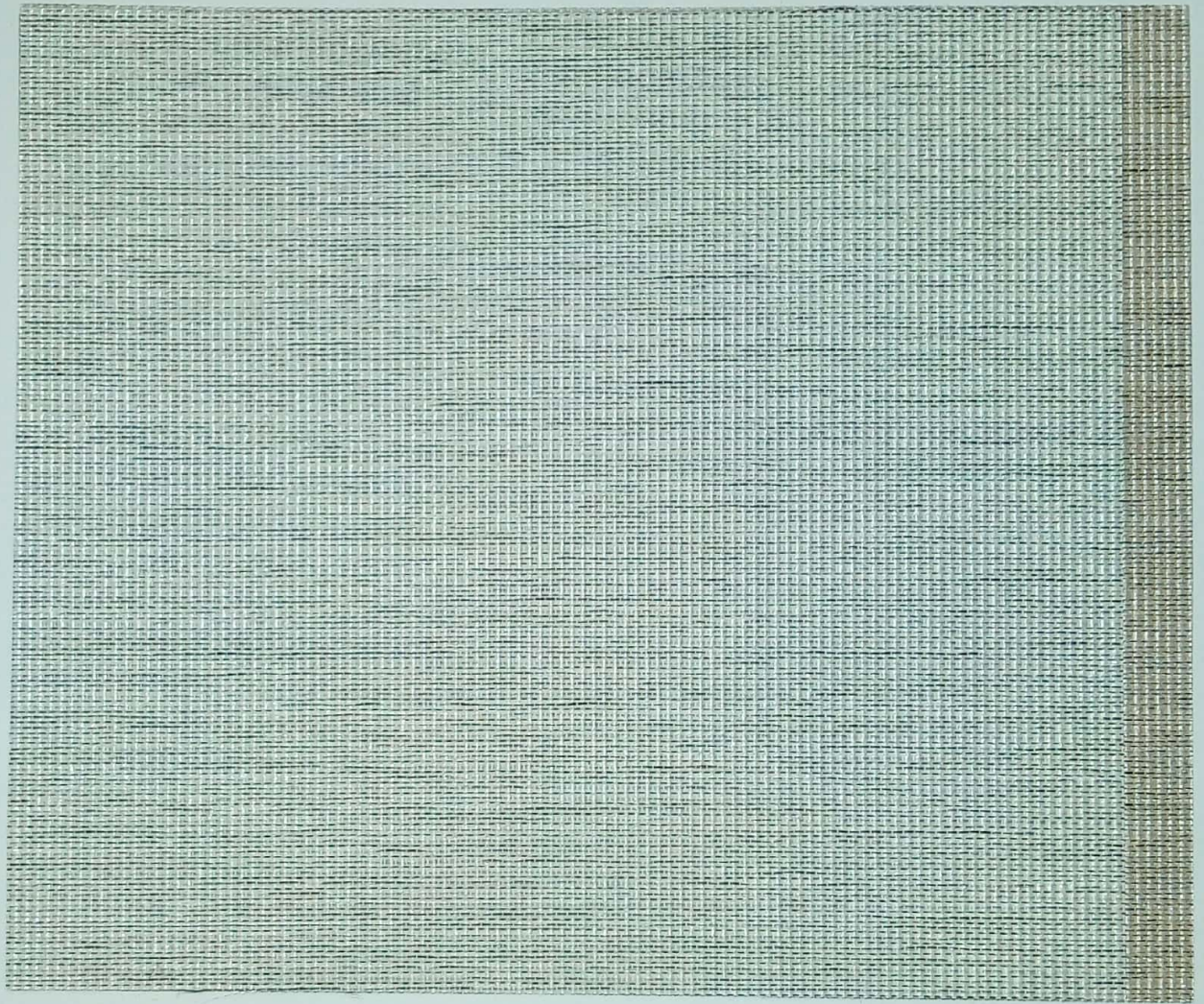
PVC free



Cold  
Cutttable



# VEGAS BLACKOUT



LB-1946 LB-1947





# VEGAS

The fabric Vegas is a blackout with a Sheen. It has a natural texture and creates a rich atmosphere. A feeling of luxury is created and at the same time it is functional fully blocking the light.



100% PES



240cm

330 g/m<sup>2</sup>



0.54mm



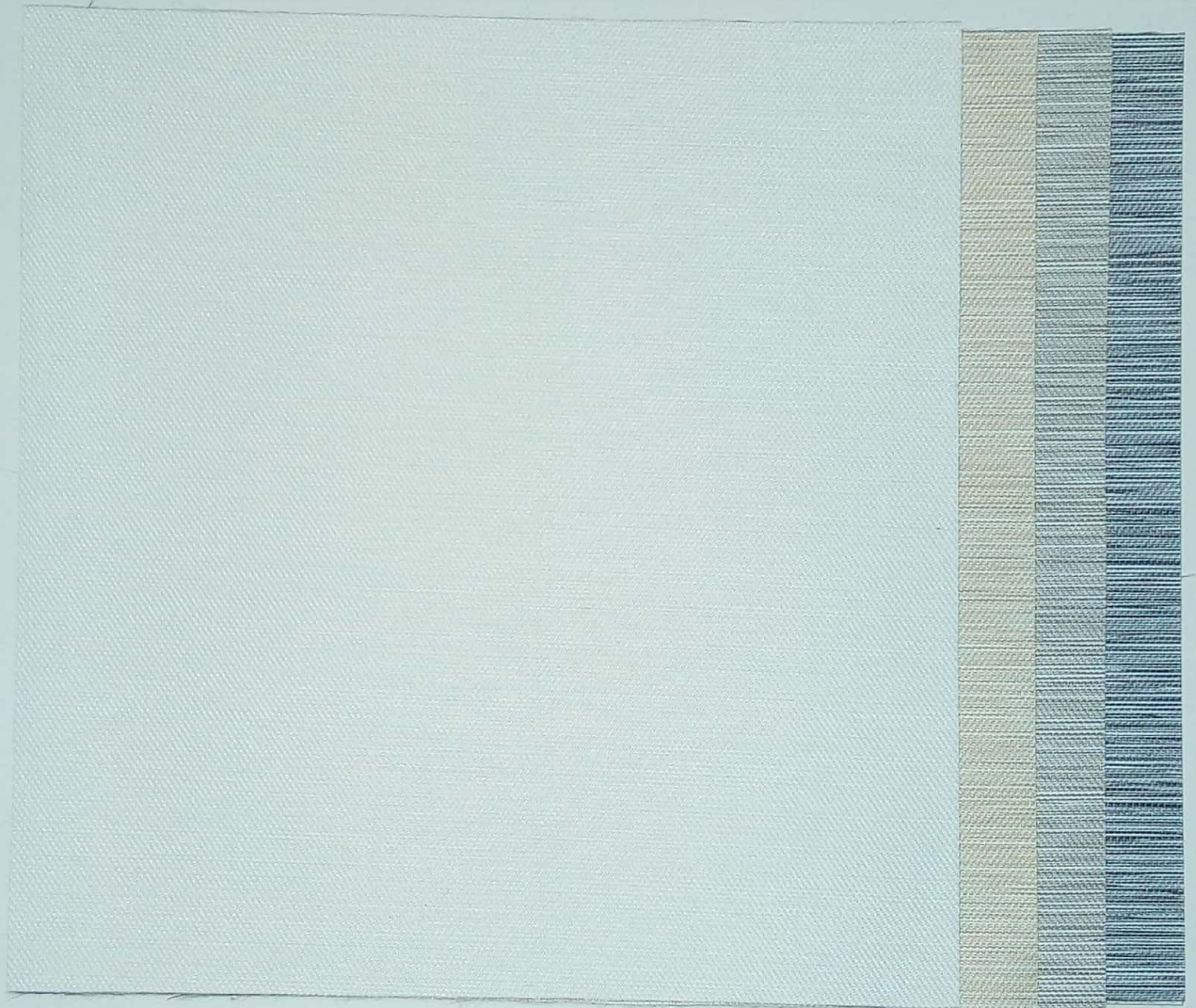
PVC free



Cold  
Cuttable



# MONTE CARLO BLACKOUT



LB-1950 LB-1951 LB-1952 LB-1953



# MONTE CARLO

The Monte Carlo is a soft blackout fabric which provides a 100% light protection. It's subtle husky hues provide a fabric with not only high functionality but also a touch of exquisite design.

47% PES + 53% ACRYL



280cm

335 g/m<sup>2</sup>



0.40mm



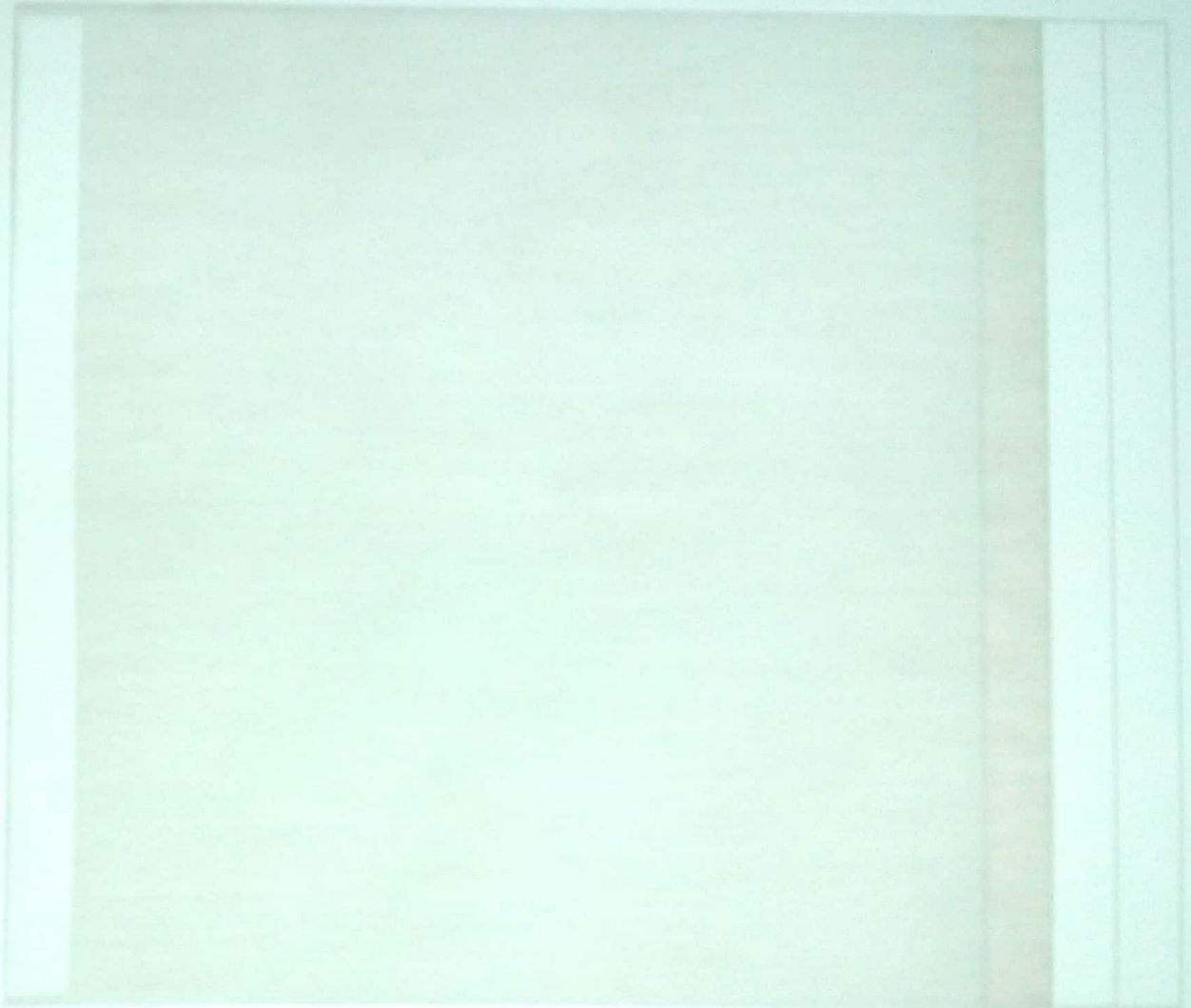
PVC free



Cold  
Cuttable



# TOKYO SHEER



LS-1000 LS-1001 LS-1002 LS-1003



# VISION IN LUXE CATALOGUE RRP (GST EXTRA 12 %)

## ROLLER BLIND / PANEL TRACK / ROMAN BLIND

SR. NO.	FABRIC NAME	FABRIC WIDTH IN MTR.	STANDARD ROLLER BLIND RS.SQ.FT.	STANDARD ROLLER BLIND RS.SQ.MTR.	VALANCE ROLLER BLIND RS.SQ.FT.	VALANCE ROLLER BLIND RS.SQ.MTR.	T1 1029 ONE TOUCH ROLLER BLIND RS.SQ.FT.	T1 1029 ONE TOUCH ROLLER BLIND RS.SQ.MTR.	STANDARD PANEL BLIND RS.SQ.FT.	STANDARD PANEL BLIND RS.SQ.MTR.	ROMAN BLIND RS.SQ.FT.	ROMAN BLIND RS.SQ.MTR.
<b>LUXESHEER</b>												
1	LS - 1901 Florence	2.8	370	3983	470	5059	602	6480	670	7212	490	5274
2	LS - 1902 Florence	2.8	370	3983	470	5059	602	6480	670	7212	490	5274
3	LS - 1903 Florence	2.8	370	3983	470	5059	602	6480	670	7212	490	5274
4	LS - 1904 Florence	2.8	370	3983	470	5059	602	6480	670	7212	490	5274
5	LS - 1905 Niagara	2.8	390	4198	490	5274	622	6695	690	7427	510	5480
6	LS - 1906 Niagara	2.8	390	4198	490	5274	622	6695	690	7427	510	5480
7	LS - 1907 Orlando	2.3	390	4198	490	5274	622	6695	690	7427	510	5480
8	LS - 1908 Orlando	2.3	390	4198	490	5274	622	6695	690	7427	510	5480
9	LS - 1909 Tokyo	2.4	370	3983	470	5059	602	6480	670	7212	490	5274
10	LS - 1910 Tokyo	2.4	370	3983	470	5059	602	6480	670	7212	490	5274
11	LS - 1911 Tokyo	2.4	370	3983	470	5059	602	6480	670	7212	490	5274
12	LS - 1912 Tokyo	2.4	370	3983	470	5059	602	6480	670	7212	490	5274
<b>LUXEUNEN</b>												
13	L - 1921 Bali	2.3	370	3983	470	5059	602	6480	670	7212	490	5274
14	L - 1922 Bali	2.3	370	3983	470	5059	602	6480	670	7212	490	5274
15	L - 1924 Bali	2.3	370	3983	470	5059	602	6480	670	7212	490	5274
16	L - 1925 Jaipur	2.3	480	5167	580	6243	712	7664	780	8396	600	6458
17	L - 1926 Jaipur	2.3	480	5167	580	6243	712	7664	780	8396	600	6458
18	L - 1927 Cinqueterre	3	370	3983	470	5059	602	6480	670	7212	490	5274
19	L - 1928 Cinqueterre	3	370	3983	470	5059	602	6480	670	7212	490	5274
20	L - 1929 Inverness	3	370	3983	470	5059	602	6480	670	7212	490	5274
21	L - 1930 Inverness	3	370	3983	470	5059	602	6480	670	7212	490	5274
22	L - 1931 Manchester	2.4	370	3983	470	5059	602	6480	670	7212	490	5274
23	L - 1932 Manchester	2.4	370	3983	470	5059	602	6480	670	7212	490	5274
24	L - 1933 Manchester	2.4	370	3983	470	5059	602	6480	670	7212	490	5274
25	L - 1934 Manchester	2.4	370	3983	470	5059	602	6480	670	7212	490	5274
26	L - 1935 Paris	3	370	3983	470	5059	602	6480	670	7212	490	5274
27	L - 1936 Paris	3	370	3983	470	5059	602	6480	670	7212	490	5274
<b>LUXE BLACKOUT</b>												
28	LB - 1941 Boston	3	480	5167	580	6243	712	7664	780	8396	600	6458
29	LB - 1942 Boston	3	480	5167	580	6243	712	7664	780	8396	600	6458
30	LB - 1943 Boston	3	480	5167	580	6243	712	7664	780	8396	600	6458
31	LB - 1944 Boston	3	480	5167	580	6243	712	7664	780	8396	600	6458
32	LB - 1946 Vegas	2.4	480	5167	580	6243	712	7664	780	8396	600	6458
33	LB - 1947 Vegas	2.4	480	5167	580	6243	712	7664	780	8396	600	6458
34	LB - 1950 Monte Carlo	2.8	370	3983	470	5059	602	6480	670	7212	490	5274
35	LB - 1951 Monte Carlo	2.8	370	3983	470	5059	602	6480	670	7212	490	5274
36	LB - 1952 Monte Carlo	2.8	370	3983	470	5059	602	6480	670	7212	490	5274
37	LB - 1953 Monte Carlo	2.8	370	3983	470	5059	602	6480	670	7212	490	5274