


ENTWINE SHEERS





Entwine Sheers is a beautiful blend of cultured and everlasting embroidered sheers. The aesthetics of the collection are refined yet ideal for any interior. Distinguished for its quality and iridescent embroidery stitches the fabrics are a balanced mix of contemporary and traditional designs. The organza-like textured sheers create a delicate and dreamy mood. The best aspect of these sheers is that they are all easy to maintain and can be machine-washed.



BARO

(9 COLOURWAYS)

The Baro design from Entwine Sheer collection emanates pure beauty. Light and airy, this design has an all over pattern of fine stem and leaves and is made of sheer organza to soften the light that streams through. It is available in 9 different colours that range from blushes and mints to neutrals. Being monochromatic, it can be paired well with plain as well as patterned main curtains. Baro is an easy-to-maintain sheer that can be machine-washed at 30 degrees temperature.



BARO-RHUBARB



BARO-BLUSH



BARO-MINT



BARO-AQUA



BARO-ECRU



BARO-SILVER



BARO-SAND

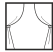







BARO-FLINT



BARO-WILLOW

TECHNICAL DETAILS

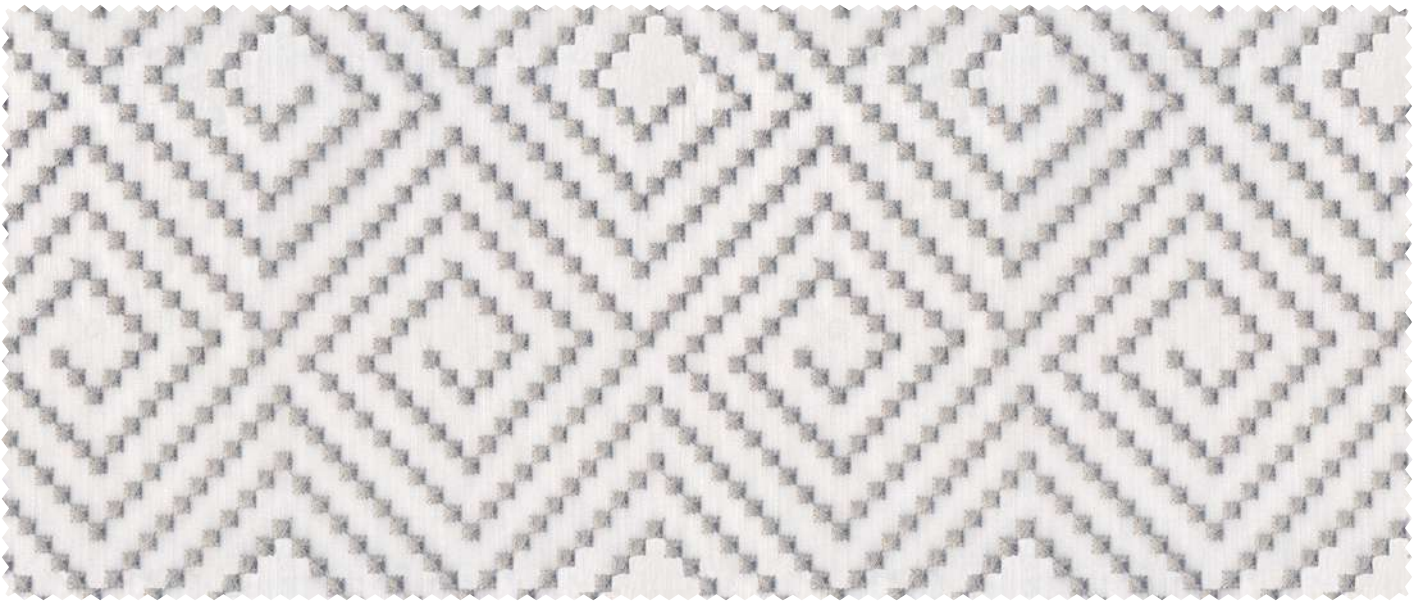
Product Name : Baro	Rec. Usage : 
Width in CM : 140	Care Instructions :     
Repeat Size in CM : Hor (26.4) x Ver (24)	Martindale : N/A
Composition : 100% PES	Pilling : 3-4
Weight GSM : N/A	Color Fastness : 3-4



BANDHEJ

(9 COLOURWAYS)

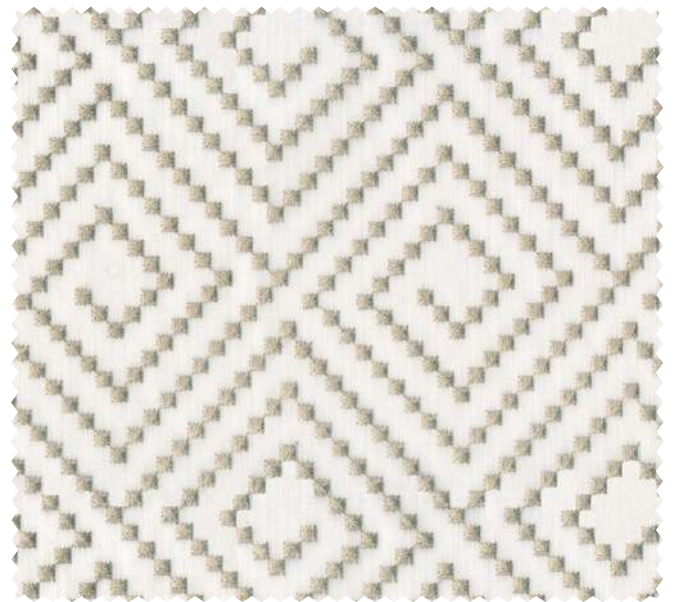
Add a pop of pattern to your window with these small-scale embroidered boxes aligned in a zigzag pattern giving Bandhej sheer design a crisp, modern look. Available in different shades of blush, mints, greys and browns this design complements traditional as well as contemporary interior styles. Bandhej is an easy-to-maintain sheer that can be machine-washed at 30 degrees temperature.



BANDHEJ-SILVER



BANDHEJ-LINEN



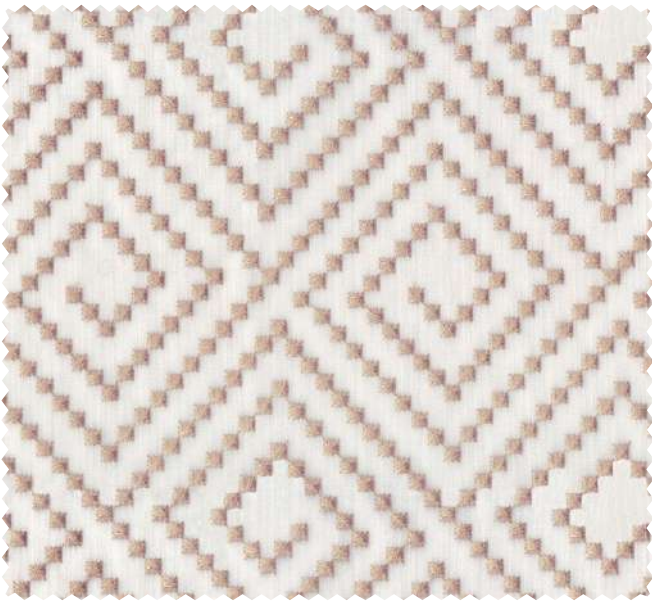
BANDHEJ-ECRU



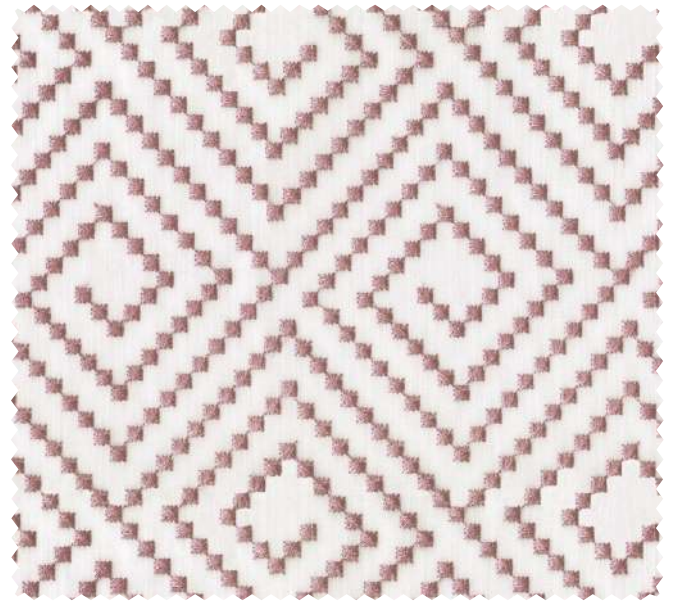
BANDHEJ-WHEAT



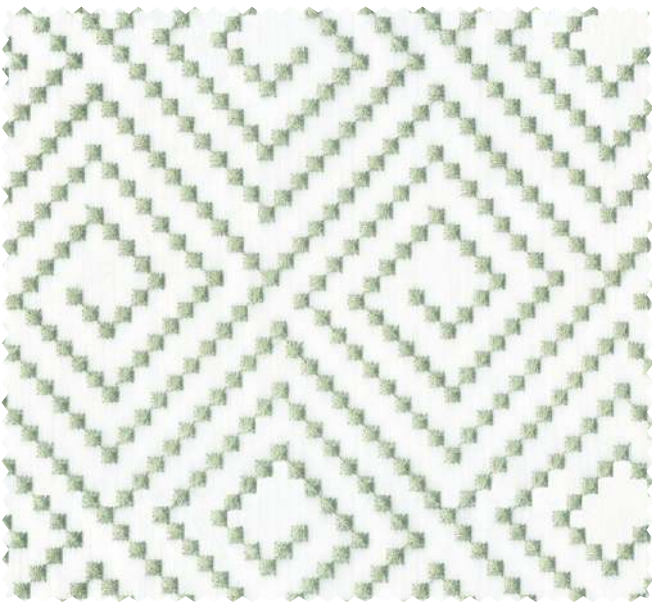
BANDHEJ-FLINT



BANDHEJ-BLUSH



BANDHEJ-RHUBARB



BANDHEJ-MINT



BANDHEJ-BEIGE

TECHNICAL DETAILS

Product Name : Bandhej	Rec. Usage :
Width in CM : 140	Care Instructions :
Repeat Size in CM : Hor (22) x Ver (16.2)	Martindale : N/A
Composition : 100% PES	Pilling : 3-4
Weight GSM : N/A	Color Fastness : 3-4



BUKHARA

(10 COLOURWAYS)

A modern classical scroll pattern is featured in this pared-back ornamental design. With the Bukhara curtain panel, individuals can create a luxurious classical interior for their spaces.

This single-coloured embroidery sheer is available in 10 different colours ranging from mints, blushes, gold and neutrals. Bukhara is an easy-to-maintain sheer that can be machine-washed at 30 degrees temperature.



BUKHARA-MINT



BUKHARA-ECRU



BUKHARA-GOLD



BUKHARA-LINEN



BUKHARA-FLINT



BUKHARA-SILVER



BUKHARA-BLUSH



BUKHARA-RHUBARB









BUKHARA-BEIGE



BUKHARA-WILLOW

TECHNICAL DETAILS

Product Name : Bukhara	Rec. Usage : 
Width in CM : 140	Care Instructions :     
Repeat Size in CM : Hor (22) x Ver (24)	Martindale : N/A
Composition : 100% PES	Pilling : 3-4
Weight GSM : N/A	Color Fastness : 3-4



CLOVER

(9 COLOURWAYS)

Add a grace to your window with a simple five-petal floral pattern with fine branches and leaves embroidered on sheer fabric. Clover is an airy textured sheer which has a playful note to it. Produced in 9 different colourways ranges from mint, blushes and neutrals, this design is suitable to light up your spaces. Clover is an easy-to-maintain sheer that can be machine-washed at 30 degrees temperature.



CLOVER-BLUSH



CLOVER-BLOSSOM



CLOVER-FLINT



CLOVER-AQUA



CLOVER-MINT



CLOVER-PEARL



CLOVER-IVORY

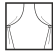







CLOVER-ECRU



CLOVER-MUSHROOM

TECHNICAL DETAILS

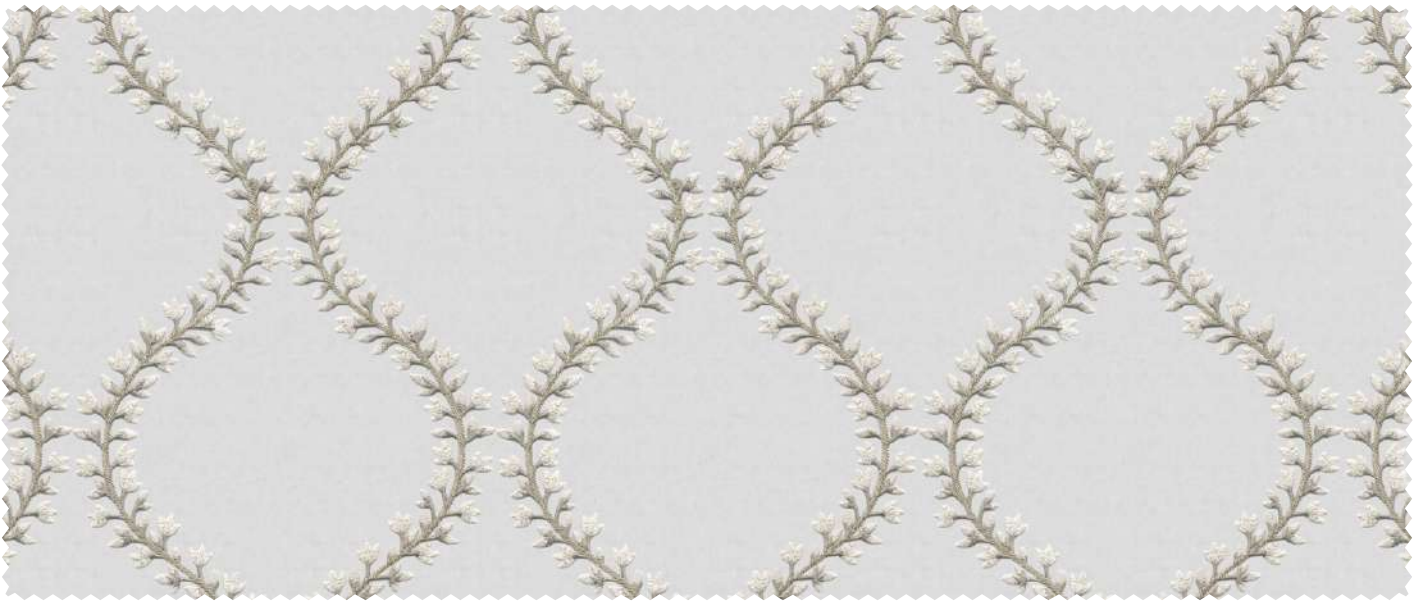
Product Name : Clover	Rec. Usage : 
Width in CM : 140	Care Instructions :     
Repeat Size in CM : Hor (33) x Ver (24)	Martindale : N/A
Composition : 100% PES	Pilling : 3-4
Weight GSM : N/A	Color Fastness : 3-4



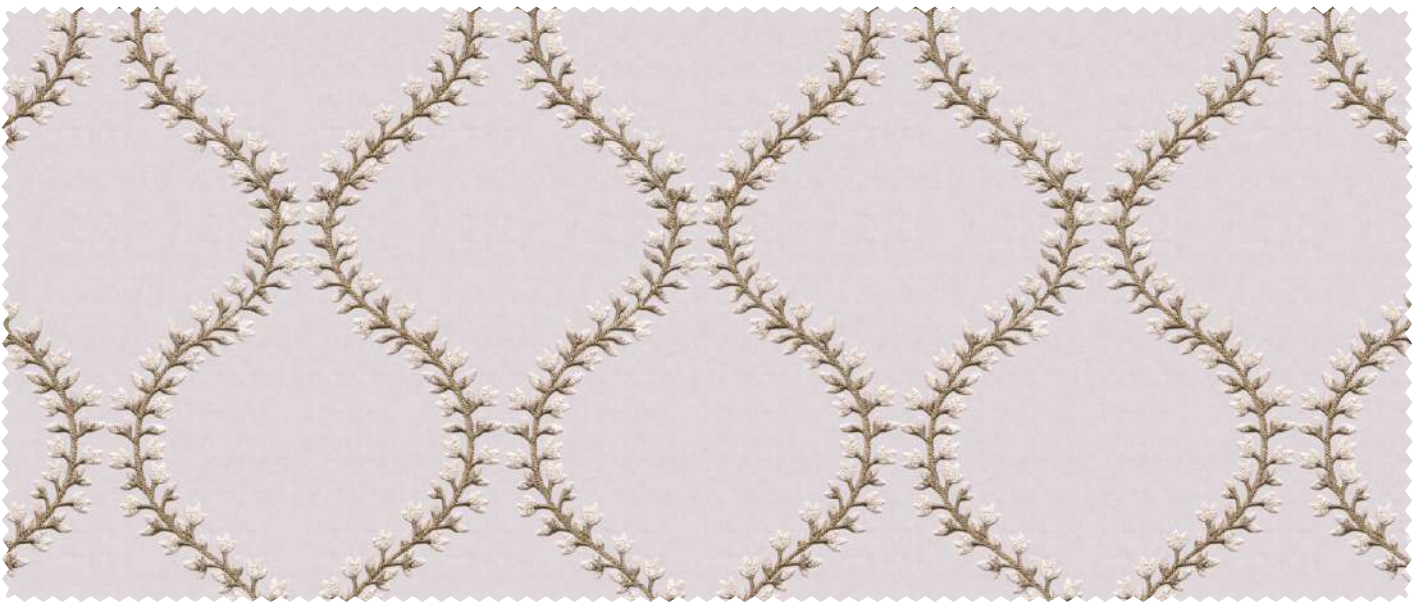
FLEUR

(2 COLOURWAYS)

Create a light and airy mood in any room with the Fleur curtain design. This soft, sheer design with gorgeous trailing embroidery all over makes a perfect pair with plain curtains or hangs beautifully by itself as a stand-alone panel. Available in exquisite shades of blush and neutrals, it is perfect for both classic and contemporary interiors. Fleur is an easy-to-maintain sheer that can be machine-washed at 30 degrees temperature.

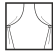







FLEUR-LINEN



FLEUR-BEIGE

TECHNICAL DETAILS

Product Name : Fleur	Rec. Usage : 
Width in CM : 140	Care Instructions :     
Repeat Size in CM : Hor (22) x Ver (24)	Martindale : N/A
Composition : 100% PES	Pilling : 3-4
Weight GSM : N/A	Color Fastness : 3-4

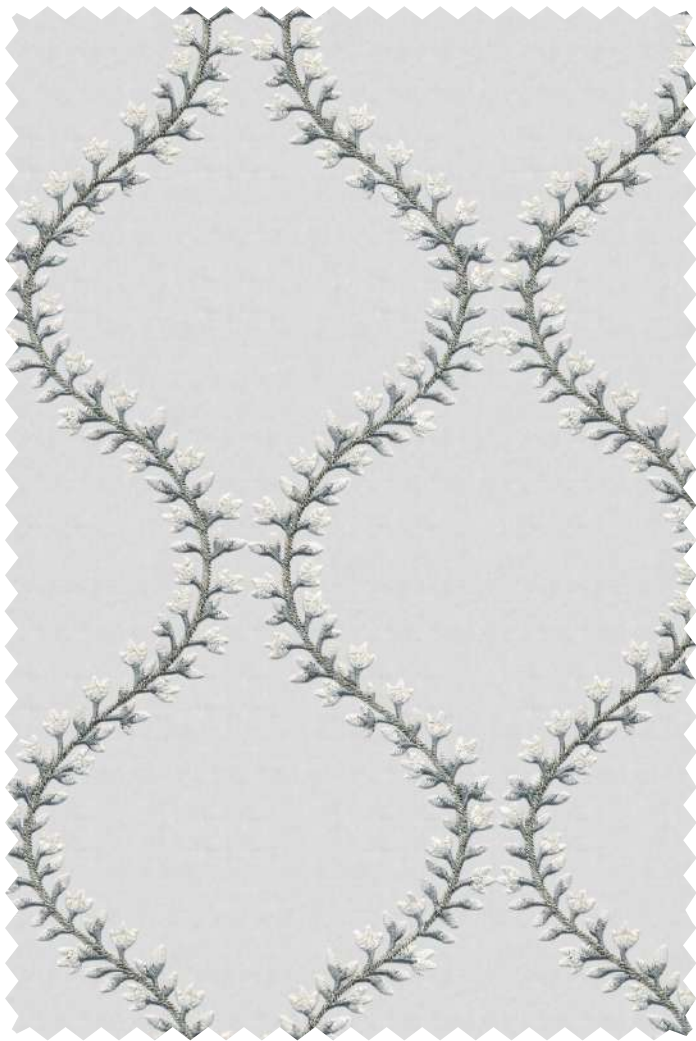


IVY

(5 COLOURWAYS)

Create a light and airy mood in any room with the Ivy curtain design.

This soft, sheer design with gorgeous trailing embroidery all over makes a perfect pair with plain curtains or hangs beautifully by itself as a stand-alone panel. Available in exquisite shades of blush and neutrals, it is perfect for both classic and contemporary interiors. Ivy is an easy-to-maintain sheer that can be machine-washed at 30 degrees temperature.



IVY-GUNMETAL



IVY-METAL



IVY-FLINT

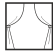



IVY-BLUSH



IVY-WILLOW

TECHNICAL DETAILS

Product Name : Ivy	Rec. Usage : 
Width in CM : 140	Care Instructions : 
Repeat Size in CM : Hor (22) x Ver (24)	Martindale : N/A
Composition : 100% PES	Pilling : 3-4
Weight GSM : N/A	Color Fastness : 3-4



KALINA

(2 COLOURWAYS)

Our Kalina curtain design invokes the spirit of Indian motifs featuring an embroidered floral design. This dual-toned floral butta is available in two classic colour tones, which can be coordinated perfectly with neutral as well as colourful main curtains. Kalina is an easy-to-maintain sheer that can be machine-washed at 30 degrees temperature.



KALINA - ECRU



KALINA - FLINT

TECHNICAL DETAILS

Product Name : Kalina	Rec. Usage :
Width in CM : 140	Care Instructions :
Repeat Size in CM : Hor (44) x Ver (24)	Martindale : N/A
Composition : 100% PES	Pilling : 3-4
Weight GSM : N/A	Color Fastness : 3-4



PERSIA

(8 COLOURWAYS)

Persia design of decorative embroidery is infused with characteristic features such as paisleys, stylised floral and undulating stems. This is a full coverage embroidery pattern, which can set the tone of any room. Dress up your window frame with exquisite shades available in this design and coordinate it your favourite plain curtains. Available in 8 colour options, Persia is an easy-to-maintain sheer that can be machine-washed at 30 degrees temperature.



PERSIA-MINT



PERSIA-BEIGE



PERSIA-MUSHROOM



PERSIA-FLINT



PERSIA-GREYSTONE



PERSIA-BLUSH

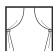







PERSIA-BLOSSOM



PERSIA-SILVER

TECHNICAL DETAILS

Product Name : Persia	Rec. Usage : 
Width in CM : 140	Care Instructions :     
Repeat Size in CM : Hor (26.4) x Ver (24)	Martindale : N/A
Composition : 100% PES	Pilling : 3-4
Weight GSM : N/A	Color Fastness : 3-4



YASMIN

(8 COLOURWAYS)

The grand paisley design, Yasmin is given a new life when embroidered gracefully on organza fabric. The paisley butta is arranged in a half-drop pattern and has a unique stitch technique. The fabric is extremely soft to touch and is available in 8 different colourways of blushes, mints, and neutrals. Yasmin is an easy-to-maintain sheer that can be machine-washed at 30 degrees temperature.



YASMIN-MINT



YASMIN-BEIGE



YASMIN-IVORY



YASMIN-MUSHROOM



YASMIN-FLINT



YASMIN-RHUBARB



YASMIN-BLUSH



YASMIN-SILVER

TECHNICAL DETAILS

Product Name : Yasmin	Rec. Usage :
Width in CM : 140	Care Instructions :
Repeat Size in CM : Hor (33) x Ver (24)	Martindale : N/A
Composition : 100% PES	Pilling : 3-4
Weight GSM : N/A	Color Fastness : 3-4



For any further Details,
Please feel free to contact
Mob. No.: +91-9643403802
Ph. No.: 0124-4632300

Corp. Off.: Plot No. 42, Sector 32,
Inst. Area (Near Medanta Hospital)
Gurugram-122001 (Haryana)
E-mail: crm@fandf.in
Website: www.fandf.online